

Atlas Copco Service agreement

ROC Care and ROC Care E

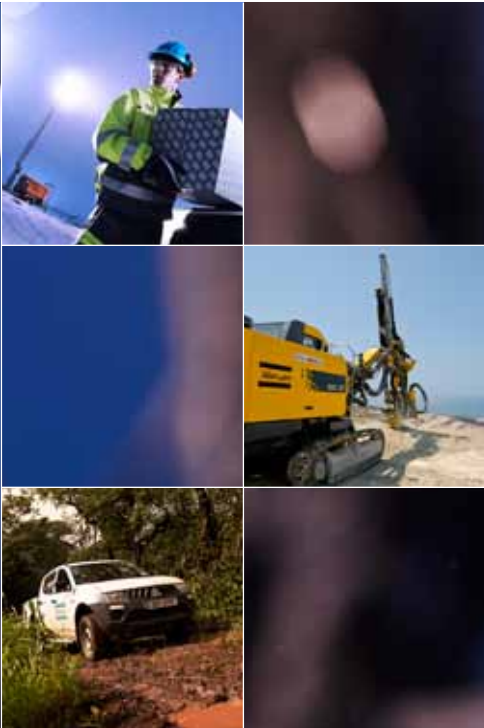


Your insurance to drill as planned

Sustainable Productivity

Atlas Copco

The service you need. When you



The real measure of your drilling investment is the lowest cost per tonne of rock – a direct result of equipment availability and drilling capacity. But, to contribute to your profit and growth, even the best equipment needs maintenance. Scheduled service, inspection protocols, ROC Care extended warranty / ROC Care E discounts, and ProCom satellite monitoring are the four key ingredients of ROC Care, Atlas Copco's value-for-money service package for surface drill rigs.

ROC Care and ROC Care E are tailor-made for the construction and quarry business. They protect all that is essential to your drilling operations. They guarantee regular inspections and service. ROC Care extends the warranty and ROC Care E gives significant discount on major parts.

ROC Care means security and peace-of-mind for at least 5000 engine-hours or four years of operation. By focusing on breakdown prevention rather than unplanned repair, it helps keep your operating costs to a minimum.

ROC Care E will take over where ROC Care ends. There is no limit in time for ROC Care E.

- *Scheduled service ensures consistent rig performance hour-after-hour, day-after-day*
- *Inspection protocols specify service details and recommend further preventive action*
- *ROC Care extended warranty protects against the risk of unplanned extra costs / ROC Care E discounts will give a significantly lower cost if a breakdown would occur*
- *Remote monitoring gives remote access to rig performance data and helps plan service*

need it.

Scheduled service

Scheduled rig inspection and service are key elements of ROC Care.

Rigs are serviced according to each original equipment manufacturer's maintenance scheme. ROC Care covers all parts needed for scheduled service, including oil filters, air filters and fuel filters. Your Atlas Copco service engineer ensures that the job is done quickly and professionally.

Inspection protocols

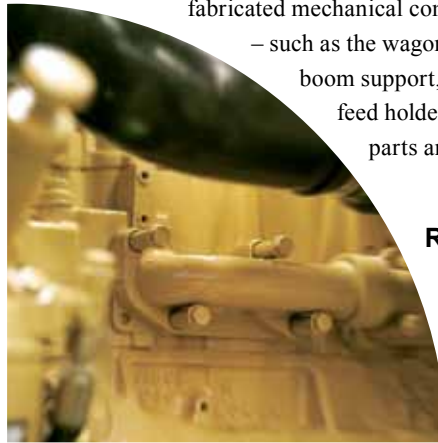
You receive a comprehensive protocol that provides full details of rig inspection and service, and also highlights further measures that can prevent potential problems from occurring. Equipment failure in service can cause costly interruptions throughout your operations, and preventive action is a simple and cost-effective way to insure yourself against it. Your inspection protocols and service book also provide verified maintenance documentation that enhances the resale value of your rig.



Extended warranty

We believe so strongly in the benefits of ROC Care that we include a generous extended warranty for 5,000 engine hours of drilling, with protection against the breakdown of such key components as the diesel engine, compressor, hydraulic pumps, feed motor/cylinder, traction motor and traction gears. In addition, all major fabricated mechanical components are included

– such as the wagon frame, track frames, boom support, booms, boom head and feed holder. Rock drill and wear parts are excluded.



Remote monitoring

ROC Care includes access to on-line ProCom monitoring, a satellite-based system that lets you monitor rig status anywhere in the world. ProCom gives you real-time documentation of rig location, engine hours, impact hours, drilled meters* and time-to-service. It enables us to schedule service with minimum disruption to your drilling, and gives you valuable rig performance data to support your costing and billing.



* Valid for the ROC D-RRC, ROC F-series, ROC L-series and SmartRigs.

ROC Care E discounts

The extended warranty is after the ROC Care period replaced by a significant discount on major parts such as compressor, boom head, hydraulic motors, pumps, etc. This will give a significantly lower cost for repair if a breakdown would occur.





*Mr. Gülant Candaş
General Manager
Çiftay Construction, Turkey*



“Full and fast support from construction to mining”

A leading example of the trend towards high quality and productivity in Turkish quarrying has been continuing since 1987 when the company was founded, but the family's involvement with rock excavation, and close association with Atlas Copco, goes back many years ago. Çiftay Construction has been working in mining operation since 2008 and that important cooperation is going on.

ROC Care started with Çiftay Construction in Turkey. First generation of ROC Care agreements are almost at the end. Now, the second generation of ROC Care agreements commenced with Çiftay again. This is a kind of ROC Care generation, one finishes another starts.

Mr. Gülant Candaş says as the General Manager of company; “We have 5xD7, 2xL8, 1xDM operating in iron and gold mines. I believe, ROC Care doesn't mean that the rigs never ever work without any problem. Some unexpected failures may

happen even under the control of ROC Care agreements. In such situations, it is very important having first actions with the service engineers for troubleshooting, solving the problems and maintaining the operation on time. And ROC Care provides all of these. ROC Care is on time agreement and the must of operation.”



Cut your total costs

ROC Care gives you the security you need to focus on doing a good, effective job. Its cost is spread over the full duration of the agreement and you are invoiced for the same low amount on a monthly basis.

Scheduled service • Inspection protocols • Extended warranty • Satellite monitoring

© Copyright 2010, Atlas Copco Rock Drills AB, Örebro, Sweden. All product names in this publication are trademarks of Atlas Copco. Any unauthorized use or copying of the contents or any part thereof is prohibited. Illustrations and photos may show equipment with optional extras. No warranty is made regarding specifications or otherwise. Specifications and equipment are subject to change without notice. Consult your Atlas Copco Customer Center for specific information.